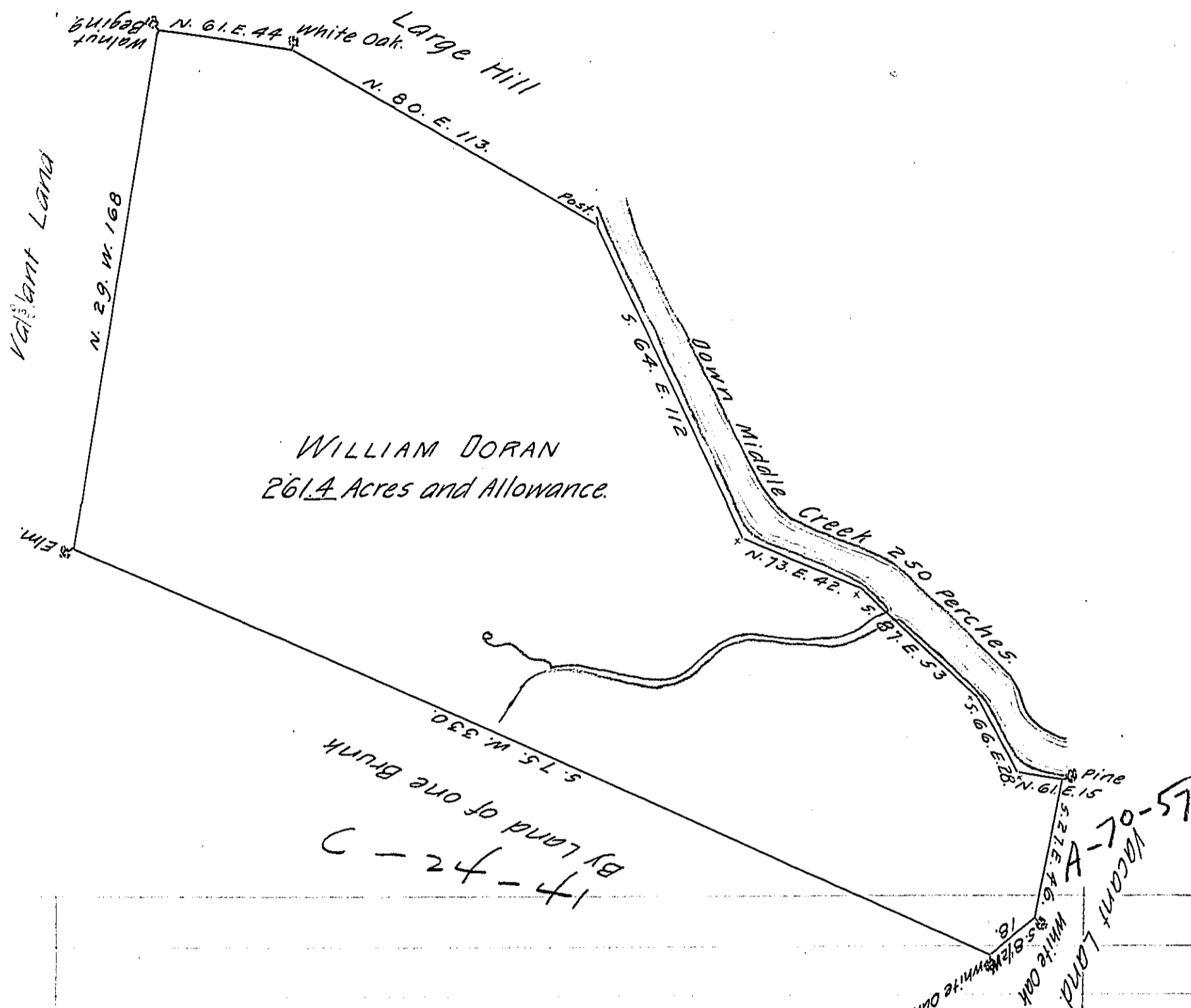


FORM NO. 1.

By



WILLIAM DORAN
261.4 Acres and Allowance.

The Draught of a Tract of Land situate on Middle Creek, in the County of Cumberland, containing Two hundred Sixty one Acres and Eighty one Perches with the usual Allowance of Six Acres $\frac{1}{4}$ Cent. for Roads &c.

Survey'd formerly By John Armstrong Esqr. for Wm Doran In Pursuance of a Warrant Bearing Date at Philad^a, the 8th of September A. D. 1755 from the Honble the Proprietaries to the Said-Doran And resurvey'd agreeable to the old Lines the 1st. of November A. D. 1765.

J. Wm MacLay, Dept^y. Surr^r.

To John Lukens Esqr. Surr^r. Genl
of the Province of Pennsylvania.

IN TESTIMONY that the above is a copy of the original remaining on file in the Department of Internal Affairs of Pennsylvania, made conformably to an Act of Assembly approved the 16th day of February, 1833, I have hereunto set my Hand and caused the Seal of said Department to be affixed at Harrisburg, this fifth day of April 1906.

Isaac D. Brown
Secretary of Internal Affairs.